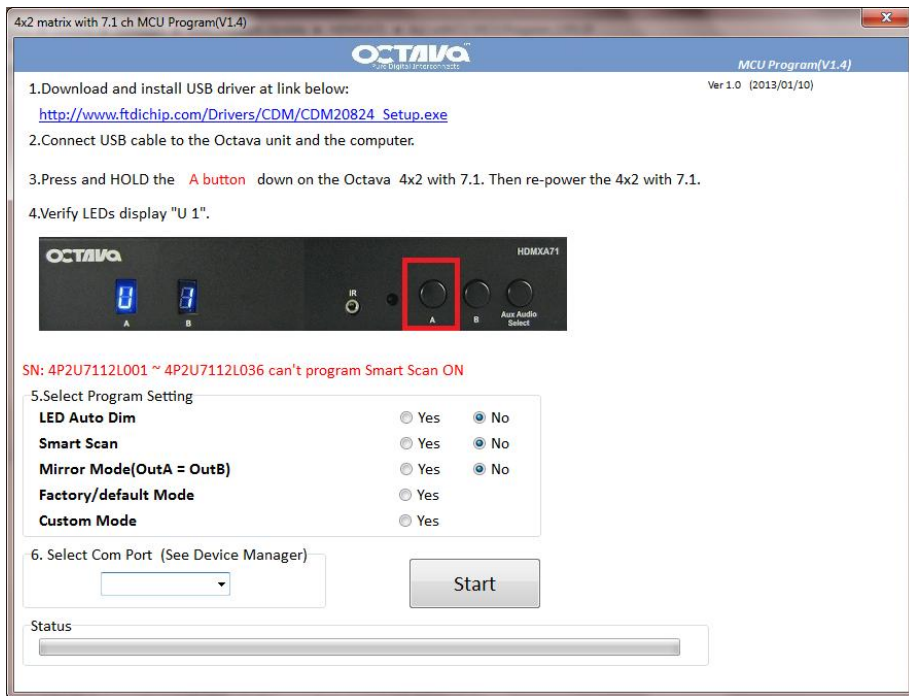


**Description:** The HDMXA71 MCU Program enables you to customize the behavior of HDMXA71 for your needs.

**Requires :** Windows XP, 7



<b>LED Auto Dim</b>	Auto LED dim will turn off front panel LED 10 seconds after last button press.
<b>Smart Scan</b>	Enable/disable Scan – Scan will auto select the Input source. Scan mode will only work with Mirror Mode ( Output A = Output B)
<b>Mirror Mode(OutA = OutB)</b>	Mirror Output A and Output B to display same input. Output A = B.
<b>Factory/default Mode</b>	Sets unit back to original settings.
<b>Custom Mode</b>	Not yet used.(For future custom modes)