



Connecting the PRO DSX to WAP and OWC

PRO DSX

Connecting

Connecting to Wireless Access point for 172.31 subnet

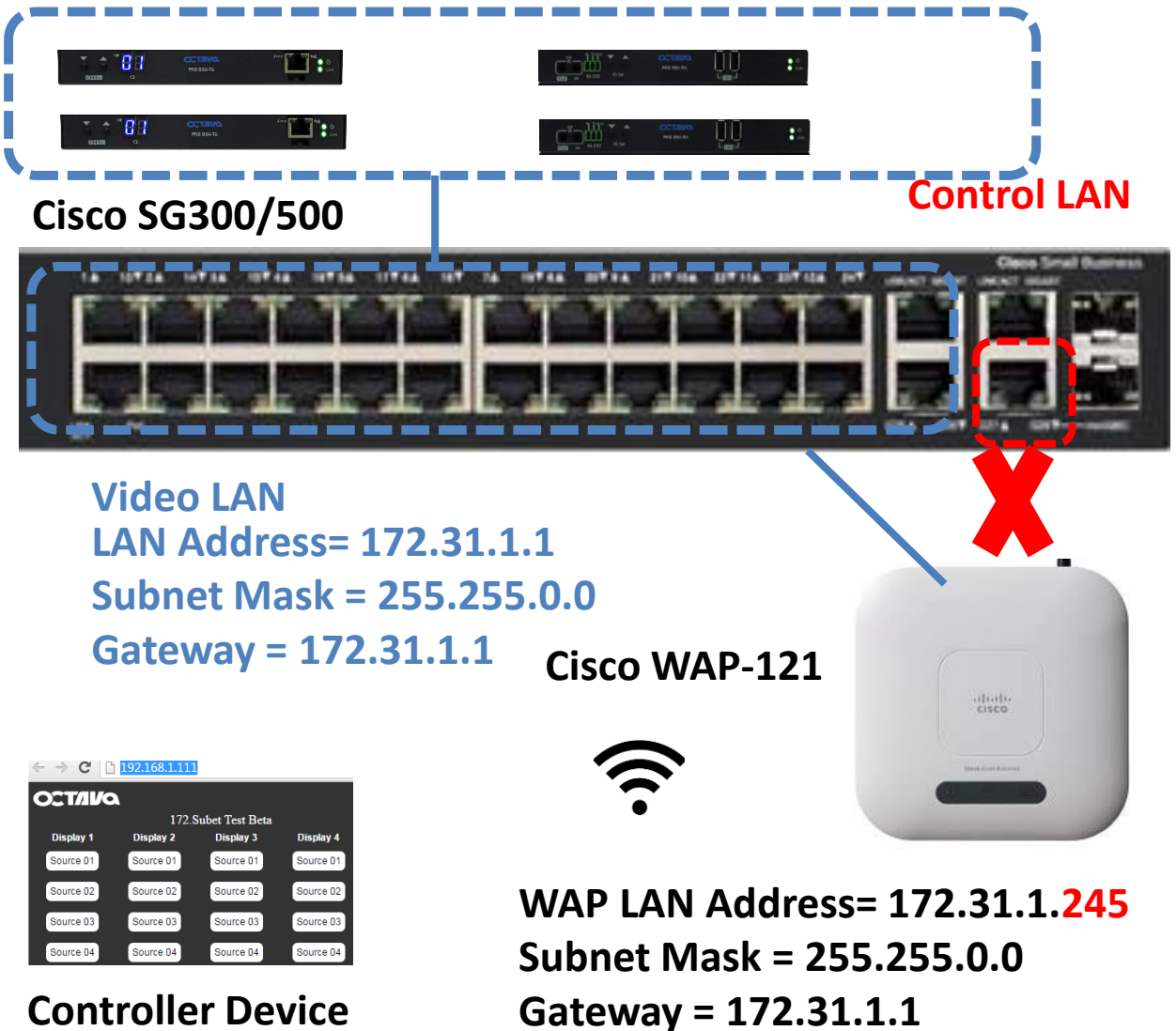
For PRO DSX units with the 6.3.1 firmware suite

Date: 4-11-2017

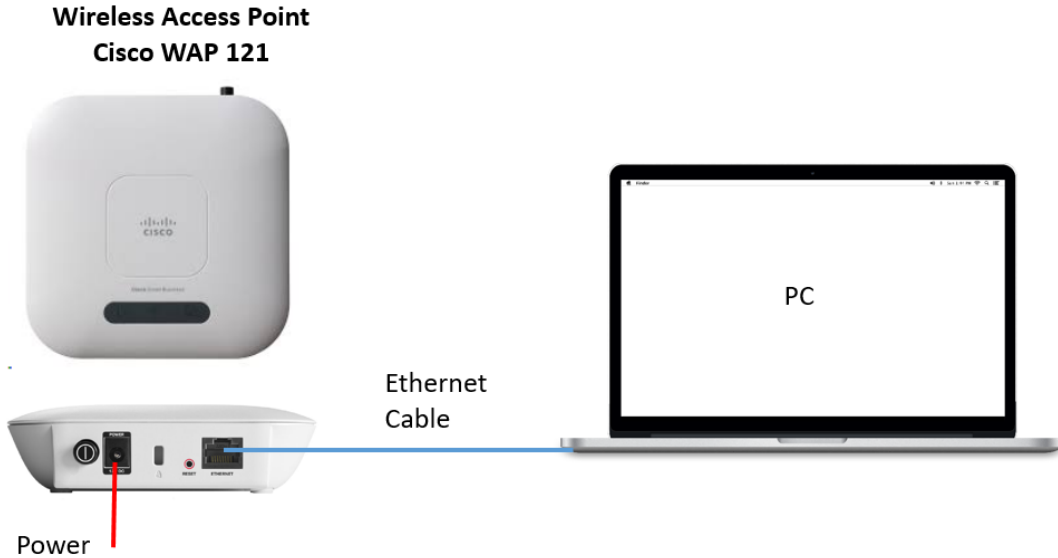
System Diagram- Using Dedicated Wireless Access Point Requirements:

1. Pre-configured Cisco SG300/500 switch
2. All devices need to be set to the **172.31** subnet
3. Dedicated Wireless Access Point
4. Controller (iPad)

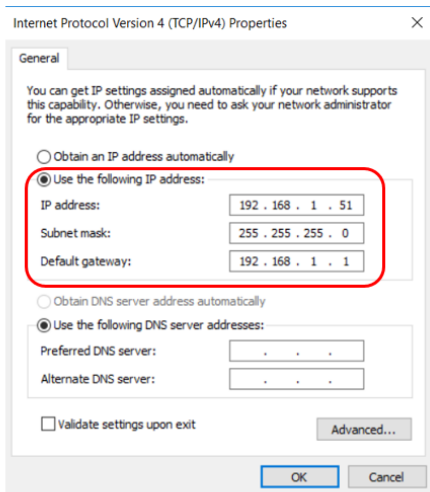
PRO DSX -TX 172.31.2.x **PRO DSX -RX** 172.31.3.x



1. Configuring the Cisco WAP 121



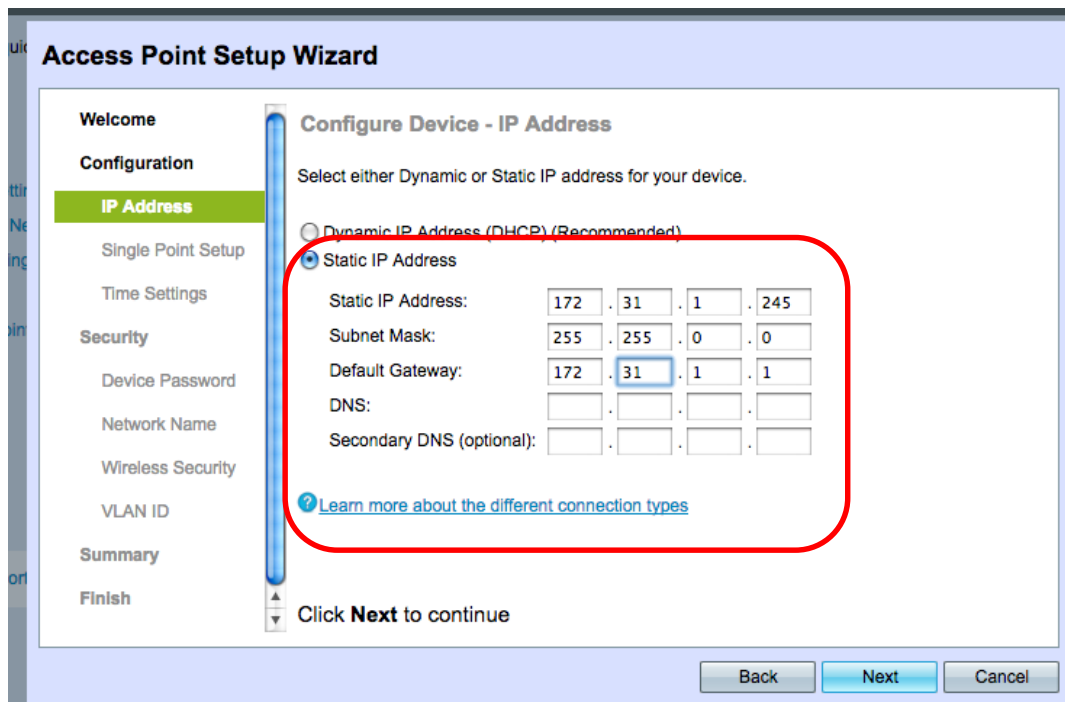
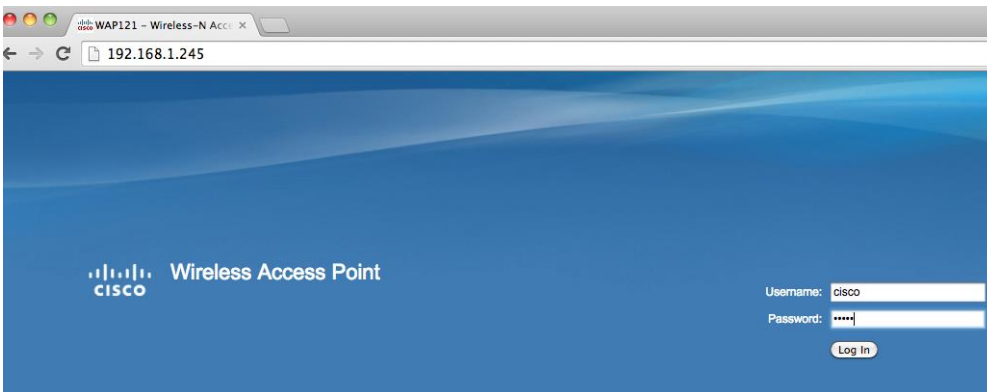
Set your IP V4 settings of the Ethernet Connection



IP address: 192.168.1. (3-253 range)
Subnet mask: 255.255.255.0
Default Gateway: 192.168.1.1

The Factory Default IP Address of the Ubiquiti Address is = 192.168.1.2
Do NOT set PC address 192.168.1.2

2. Wireless Access Point(WAP121) settings



Assign STATIC IP address to the WAP

WAP LAN Address= 172.31.1.245

Subnet Mask = 255.255.0.0

Gateway = 172.31.1.1

Access Point Setup Wizard

Welcome

Configuration

- ✓ IP Address
- Single Point Setup**
- Time Settings
- Security**
- Device Password
- Network Name
- Wireless Security
- VLAN ID
- Summary
- Finish

Single Point Setup – Set A Cluster

A cluster provides a single point of administration and lets you view, deploy, configure, and secure the wireless network as a single entity, rather than as a collection of individual devices.

☐ Create a New Cluster
Recommended for a new deployment environment.
New Cluster Name:
AP Location:

☐ Join an Existing Cluster
Recommended for adding new wireless access points to the existing environment.
Existing Cluster Name:
AP Location:

☒ Do not Enable Single Point Setup
Recommended for single device deployments or if you prefer to configure each device individually.

Click **Next** to continue

Back Next Cancel

Choose “DO not Enable Single Point Setup”

Access Point Setup Wizard

Welcome

Configuration

- ✓ IP Address
- ✓ Single Point Setup
- ✓ Time Settings
- Security**
- Device Password**
- Network Name
- Wireless Security
- VLAN ID
- Summary
- Finish

Enable Security - Set Password

The administrative password protects your access point from unauthorized access. For security reasons, you should change the access point password from the default password. Record this password down for future reference.

Enter a new device password:
New password needs at least 8 characters composed of lowercase letters, uppercase letters, numbers/symbols by default.

New Password:

Confirm Password:

Password Strength Meter: Below Minimum

Password Complexity: ☒ Enable

[Learn more about passwords](#)

Click **Next** to continue

Back Next Cancel

Update the administrative password and record it below

Cisco WAP121 Administrative Password =

Access Point Setup Wizard

Welcome

Configuration

- ✓ IP Address
- ✓ Single Point Setup
- ✓ Time Settings

Security

- ✓ Device Password

Network Name

Wireless Security

VLAN ID

Summary

Finish

Enable Security - Name Your Wireless Network

The name of your wireless network, known as an SSID, identifies your network so that wireless devices can find it.

Enter a name for your wireless network:

Network Name (SSID): For example: MyNetwork

[? Learn more about network names](#)

Click **Next** to continue

Back Next Cancel

Update Network Name (SSID) and record it below:

WAP121 SSID Name:

Access Point Setup Wizard

Welcome

Configuration

- ✓ IP Address
- ✓ Single Point Setup
- ✓ Time Settings

Security

- ✓ Device Password
- ✓ Network Name

Wireless Security

VLAN ID

Summary

Finish

Enable Security - Secure Your Wireless Network

Select your network security strength.

☐ Best Security (WPA2 Personal - AES)
 Recommended for new wireless computers and devices. Older wireless devices might not support this option.

☐ Better Security (WPA Personal - TKIP/AES)
 Recommended for older wireless computers and devices.

☒ No Security (Not recommended)

Enter a security key with 8-63 characters.

Below Minimum

☒ Show Key as Clear Text

[? Learn more about your network security options](#)

Click **Next** to continue

Back Next Cancel

Update Wireless Network Security Password and record it below:

WAP121 Wireless Security Password:

Access Point Setup Wizard

Welcome

Configuration

- ✓ IP Address
- ✓ Single Point Setup
- ✓ Time Settings

Security

- ✓ Device Password
- ✓ Network Name
- ✓ Wireless Security

VLAN ID

Summary

Finish

Enable Security - Assign The VLAN ID For Your Wireless Network

By default, the VLAN ID assigned to the management interface for your access point is 1, which is also the default untagged VLAN ID. If the management VLAN ID is the same as the VLAN ID assigned to your wireless network, then the wireless clients associated with this specific wireless network can administer this device. If needed, an access control list (ACL) can be created to disable administration from wireless clients.

Enter a VLAN ID for your wireless network:

VLAN ID: (Range: 1 - 4094)

[Learn more about vlan ids](#)

Click **Next** to continue

VLAN ID =1

Access Point Setup Wizard

Welcome

Configuration

- ✓ IP Address
- ✓ Single Point Setup
- ✓ Time Settings

Security

- ✓ Device Password
- ✓ Network Name
- ✓ Wireless Security
- ✓ VLAN ID

Summary

Finish

Summary - Confirm Your Settings

Please review the following settings and ensure the data is correct.

Network Name (SSID):	ciscosb
Network Security Type:	plain-text
Security Key:	
VLAN ID:	1

Note: The AP Radio will be enabled after clicking Submit.

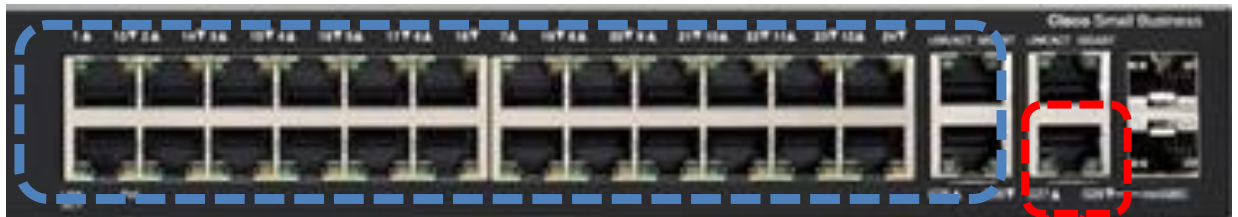
Click **Submit** to enable settings on your Cisco Small Business Access Point

SUBMIT. Done.

3. Connect the WAP121 to the pre-programmed Cisco SG 300/500 Switch “Video Lan” (labeled by your supplier)

Cisco SG300/500

Control LAN



Video LAN
LAN Address= 172.31.1.1
Subnet Mask = 255.255.0.0
Gateway = 172.31.1.1



Cisco WAP-121

WAP LAN Address= 172.31.1.245
Subnet Mask = 255.255.0.0
Gateway = 172.31.1.1

4. Connect your iPad to the WAP121 Wireless network Set your controller device to Static mode.

For example for iPad, select the Wi-Fi and select Static



IP Address: choose 172.31.1.2 -172.31.1.244 . (each controller device need to have a unique ip address)

Subnet Mask: 255.255.0.0

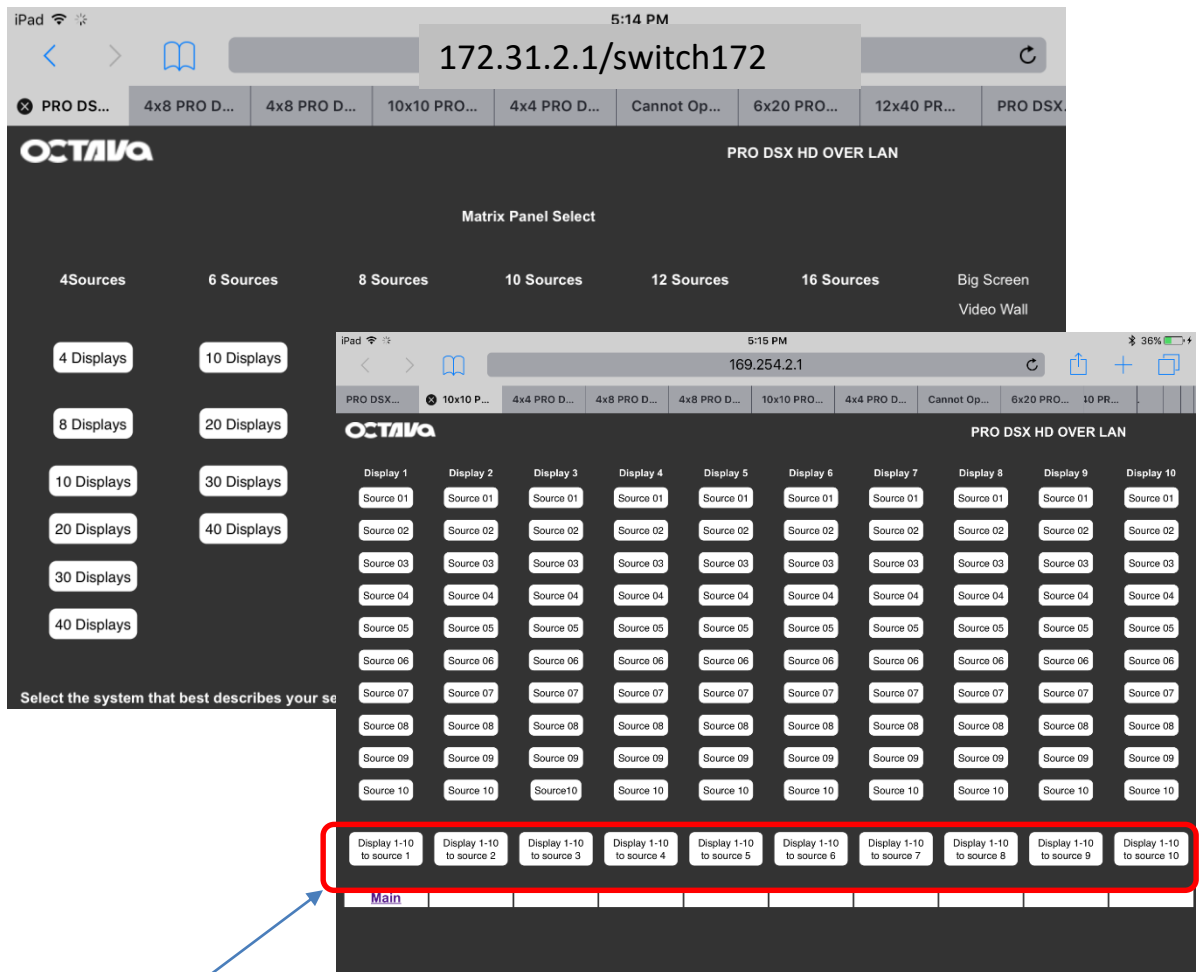
Gateway: 172.31.1.1

DNS : 172.31.1.1. (iPad requires you type in DNS)

Embedded Octava Web Controller (owc)

The PRO DSX features the Octava Web Controller (OWC) to easily switch devices

Access the General Octava Web Controller (OWC) on the TX 01 by entering:
172.31.2.1/switch172



Note:

1. Presets opens multiple devices and will require that you ENABLE “POP Ups” in the browser settings.

WEB Interface Access

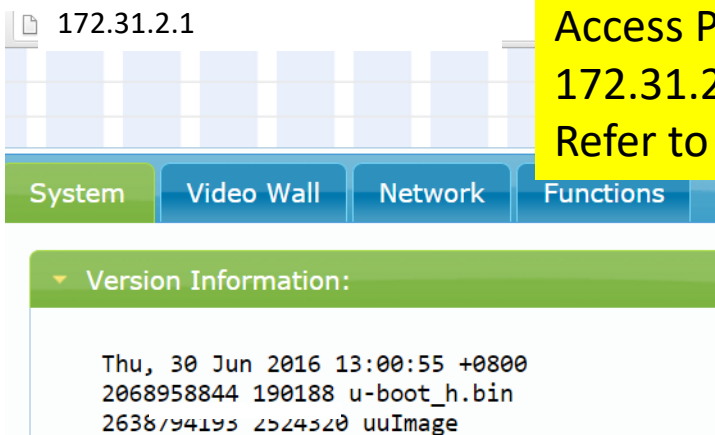
The PRO DSX- TX and RX has various features that can be enabled and modified by directing accessing the TX or RX web interface.

The static IP address of the PRO DSX –TX and RX are indicated as shown by the LED as shown in section 6.

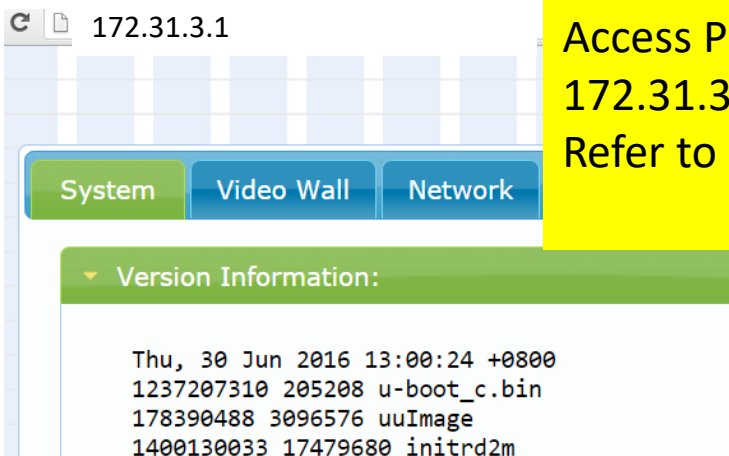
Example:

PRO DSX –TX ip address are : 172.31.2.xx (user set)

PRO DSX –RX ip address are : 172.31.xx (user set)



Access PRO DSX-TX by entering:
172.31.2.xx
Refer to LED indicator.



Access PRO DSX-RX by entering:
172.31.3.xx
Refer to LED indicator.