

HDMI Over IP-PRO DSX Network Switch Configuration For Cisco SG350

Revision: 1.2
Date: 8/29/18

The Octava PRO DSX HDMI over IP based Matrix System works in conjunction with a Cisco SG-350 series managed Ethernet switch.

You must first configure the Cisco SG-350 series managed Ethernet Switch prior to using it as a video matrix .

We can pre-configure the SG350 Ethernet Switch for you. Please contact us for this service.

If you already have a SG350 Ethernet switch and wish to configure it yourself please follow these procedures:

What You will need to configure your Managed Ethernet Switch:

1. PC with MS Windows
2. Cisco SG-350 Ethernet switch
3. A Cat 5/6 cable

1. Connect a LAN cable directly from you PC to the SG-350-xx Ethernet switch.



2. Login into the Cisco SG-350 per the instructions shown here. You may refer to the Cisco user manual as well.

Accessing and Managing Your Switch

Use the Web-Based Interface

To access the switch by using the web-based interface, you must know the IP address the switch is using. The switch uses the factory default IP address of **192.168.1.254** by default.

When the switch is using the factory default IP address, the System LED flashes continuously. When the switch is using a DHCP server-assigned IP address or an administrator has configured a static IP address, the System LED is on solid (DHCP is enabled by default).

NOTE If you are managing the switch through a network connection and the switch IP address is changed, either by a DHCP server or manually, your access to the switch will be lost. You must enter the new IP address the switch is using into your browser to use the *web-based interface*. If you are managing the switch through a console port connection, the link is retained.

To configure the switch through an IP network:



STEP 1 Power on the computer and the switch.

STEP 2 Set the IP configuration on your computer.

- a. If the switch is using the factory default IP address of **192.168.1.254**, you must choose an IP address for the computer in the range of 192.168.1.1—192.168.1.253 that is not already in use.
- b. If the IP addresses is assigned by a DHCP server, make sure the DHCP server is running and can be reached from the switch and the computer. It might be necessary to disconnect and reconnect the devices for them to discover their new IP addresses from the DHCP server.

NOTE Details on how to change the IP address on your computer depend upon the type of architecture and operating system you are using. Use the computer Help and Support functionality to search for “IP Addressing.”

STEP 3 Open a Web browser window. If you are prompted to install an Active-X plug-in when connecting to the device, follow the prompts to accept the plug-in.

STEP 4 Enter the switch IP address in the address bar and press **Enter**. For example, **http://192.168.1.254**.

The *Switch Login Page* displays.

STEP 5 Enter the default login information:

- Username is **cisco**
- Default password is **cisco** (passwords are case sensitive)

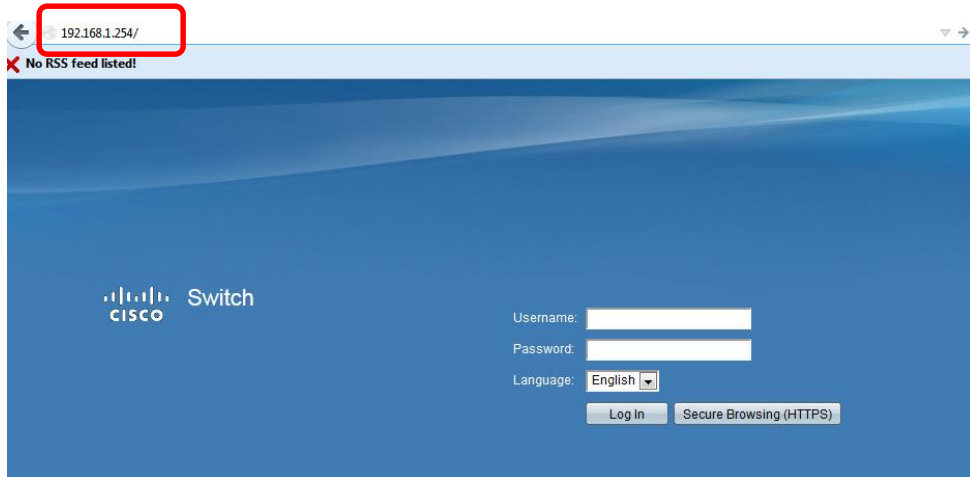
STEP 6 If this is the first time that you have logged on with the default username and password, the *Change Password Page* opens. The rules for constructing a new login and password are displayed on the page. Enter a new administrator password and click **Apply**.



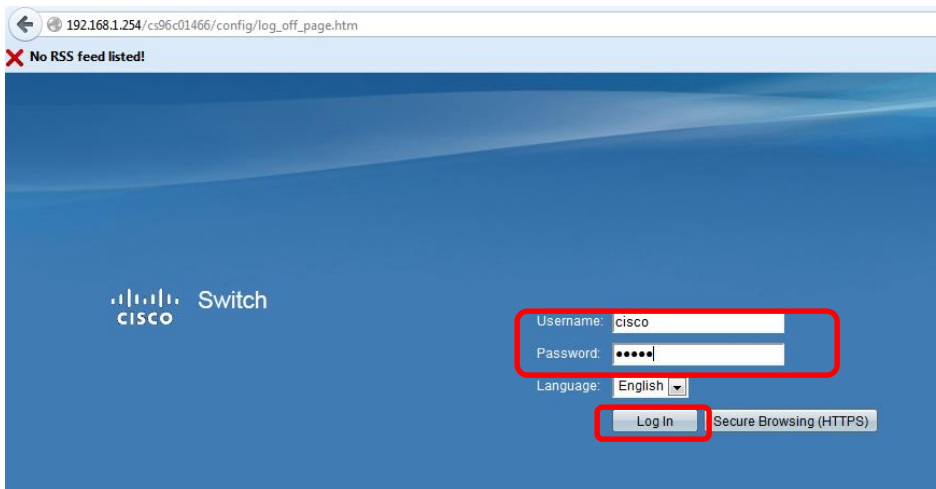
CAUTION

Make sure that any configuration changes made are saved to the Startup configuration before exiting from the web-based interface by clicking on the **Save** icon. Exiting before you save your configuration will result in all current changes being lost the next time the switch is rebooted.

3. Enter 192.168.1.254 in your browser.

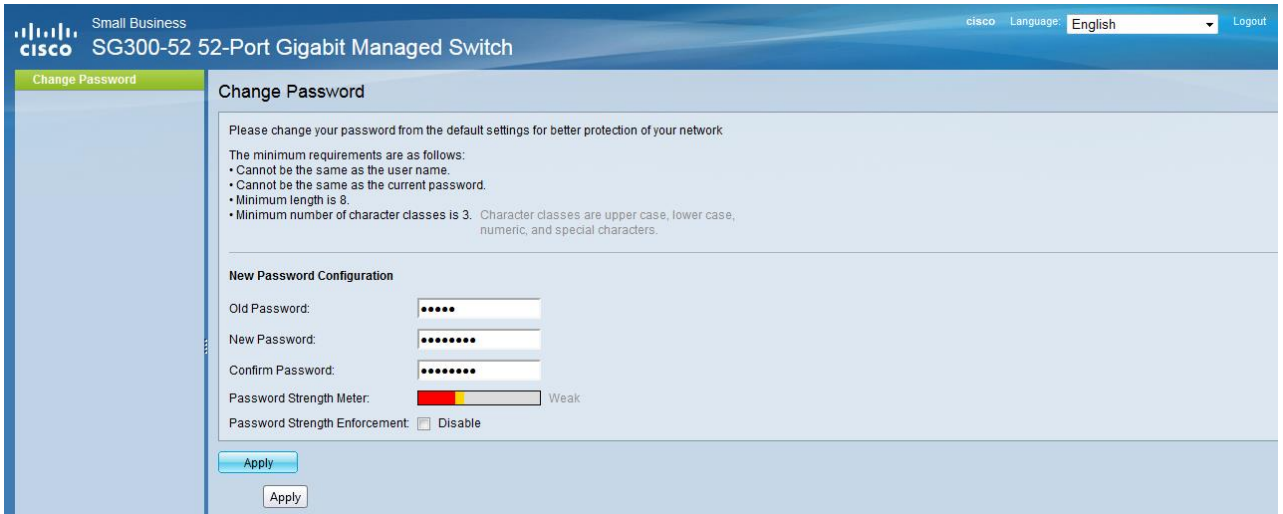


4. Enter the default credentials: and Login
Login: cisco
Password: cisco



* If your login and password does not work, do a system RESET to the Ethernet switch to factory default . See you Installation Manual.

5. Confirm and Change your password



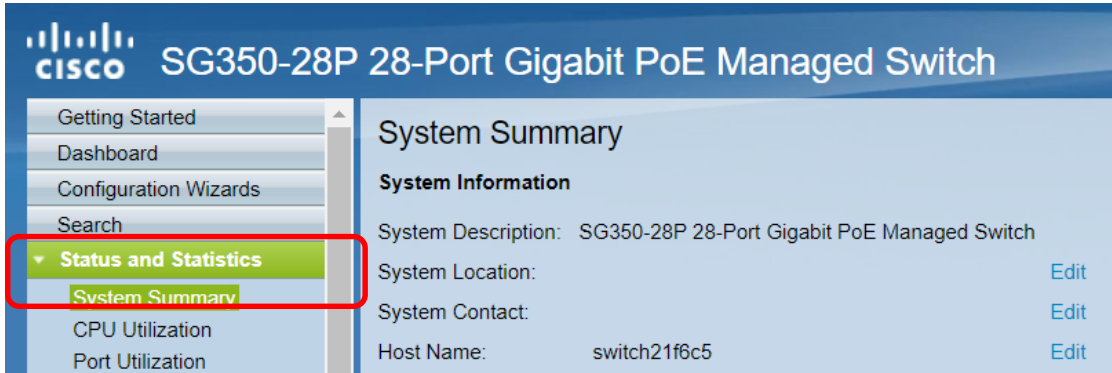
If possible use the se following as the NEW Login and Password

Please Note your Login : cisco

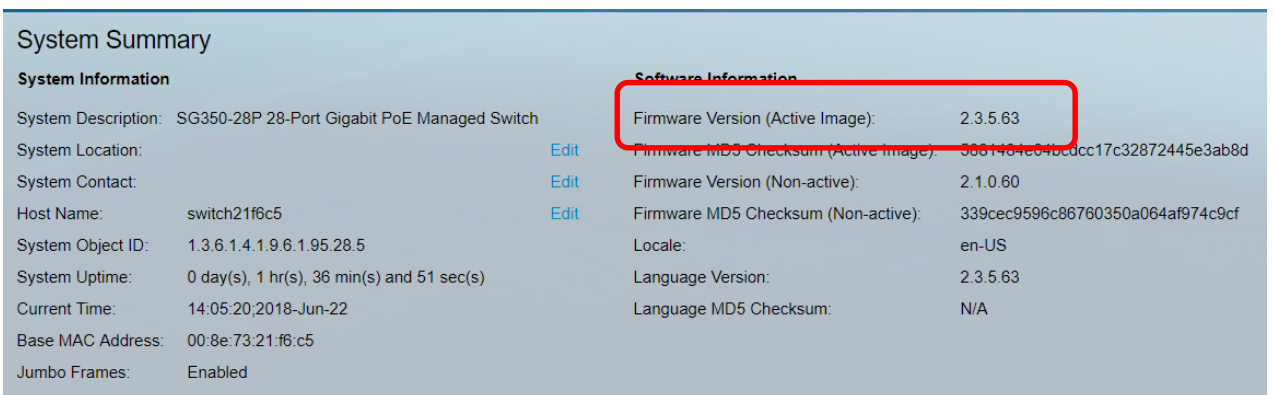
Please Note your Password: sg350-octava

6. Verify that the Cisco SG350 switch firmware revision.

6.1 Go to System Summary.



6.2 Check Firmware Version is 2.3.5.63 or later



If the firmware is not up to date. Please refer to your user manual and perform a firmware update. You may check at this url :

<http://software.cisco.com/download/navigator.html?mdfid=283009439>

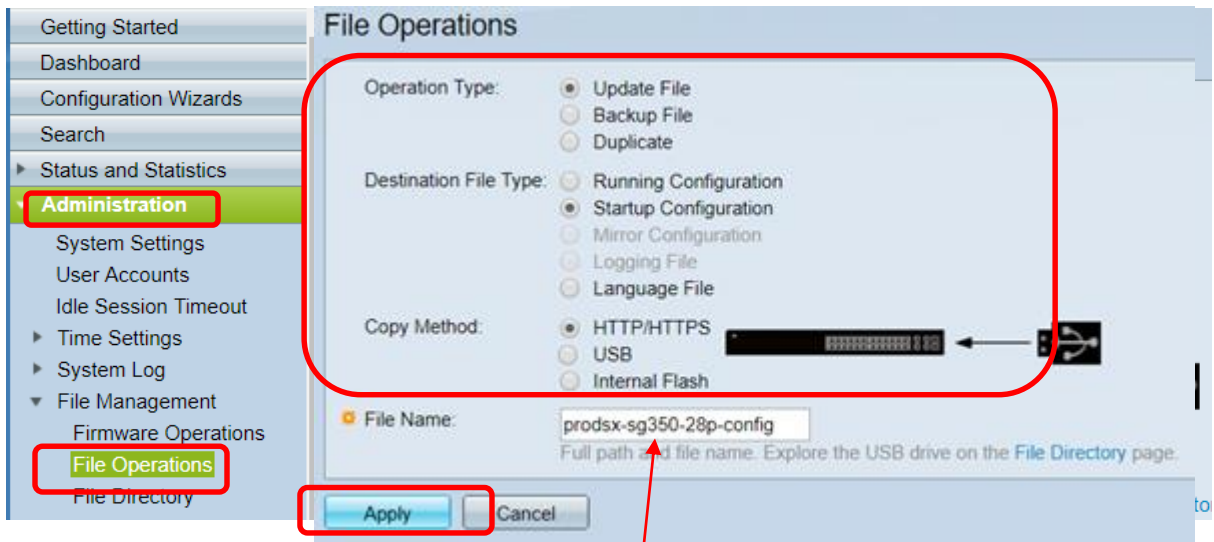
7. Download the appropriate config file to your computer

8. Update Configuration File

8.1 Select Administration Menu

8.2 Select File Management

8.3 Select File Operations



9. Operation Type: Select Update File
 Destination File Type : Startup Configuration
 Copy Method : HTTP/HTTPS
 File Name : *choose file from step 7*

10. APPLY

11. Reboot

11.1 Select Administration

11.2 Select Reboot. Wait until unit completes processing the data.
Done.

